

PRIORITY OF TREATMENT - UPSTREAM TRUSS

Condition	Upper Framing and Roof System									Truss System								
	P ₀	P _{1,5}	P ₀	Rafter PL	Rafters	Upper Lat. Bracing	Tie Beams	Trans. Knee Braces	Metal Roofing	Top Chord, Left	Top Chord, Right	L ₂ -U ₁	L ₁ -U ₁	L ₂ -U ₂	L ₁ -U ₂	Bot. Chord, L ₂ -L ₂	Bot. Chord, L ₃ -L ₂	Matched Wedges in Vorticals
Teron failure at rafter PL Vertical Splits, some fresh. Previous lap repair with logs. Vertical splits, some fresh. Previous lap repair with logs. Evidence of powder post beetles on wall and Many broken rafter tails beyond birdsmouth joint from tree impact Lack of lateral bracing Several failed connections at ends. Weak hold down detail (form ties). Evidence of powder post beetles in all. Weak spiked and connections Crushed and end at lower ends from tree impact Many splits and cracks. Some stitch spikes. Poor inclination of grain. Severe wane. Many splits and cracks. Some stitch spikes. Poor inclination of grain. Severe wane. Piece from '77 rot job. Subsequent lap joint repair w/ 1/2" form ties. Tail broken off. Lap splice w/ 1/2" form ties. Inside face of tail broken off. Longitudinal shrinkage crack in upper portion. Tail is split with 2 - 1/2" stitch bolts. Insufficient "let" detail at first diagonal. Lack of adequate horizontal shear resistance. Insufficient "let" detail at first diagonal. Lack of adequate horizontal shear resistance. Evidence of powder post beetles common in masonry.	2	2	2	1	1	1	and 2	1	2	2	2	2	2	2	2	2	2	1
Replace in kind Replace in kind Replace in kind Insecticide treatment Sister on rafter tails Add supplemental knee bracing - similar to Gifford Bridge Improve connection resistance at end of tie beam. Insecticide Treatment for all. Replace tie beam at P _{1,5} in kind. Improve connection resistance with the use of lag screws. Replace in kind on north side only. Replace in kind. Match existing splice configuration Replace in kind. Match existing splice configuration Replace in kind Replace in kind Replace in kind Replace in kind. Replace in kind with longer chord extensions Replace in kind with longer chord extensions Insecticide treatment	A	B	C	D	E	F	G	H	I	J	K	L	M	N	O	P	Q	R

LEGEND

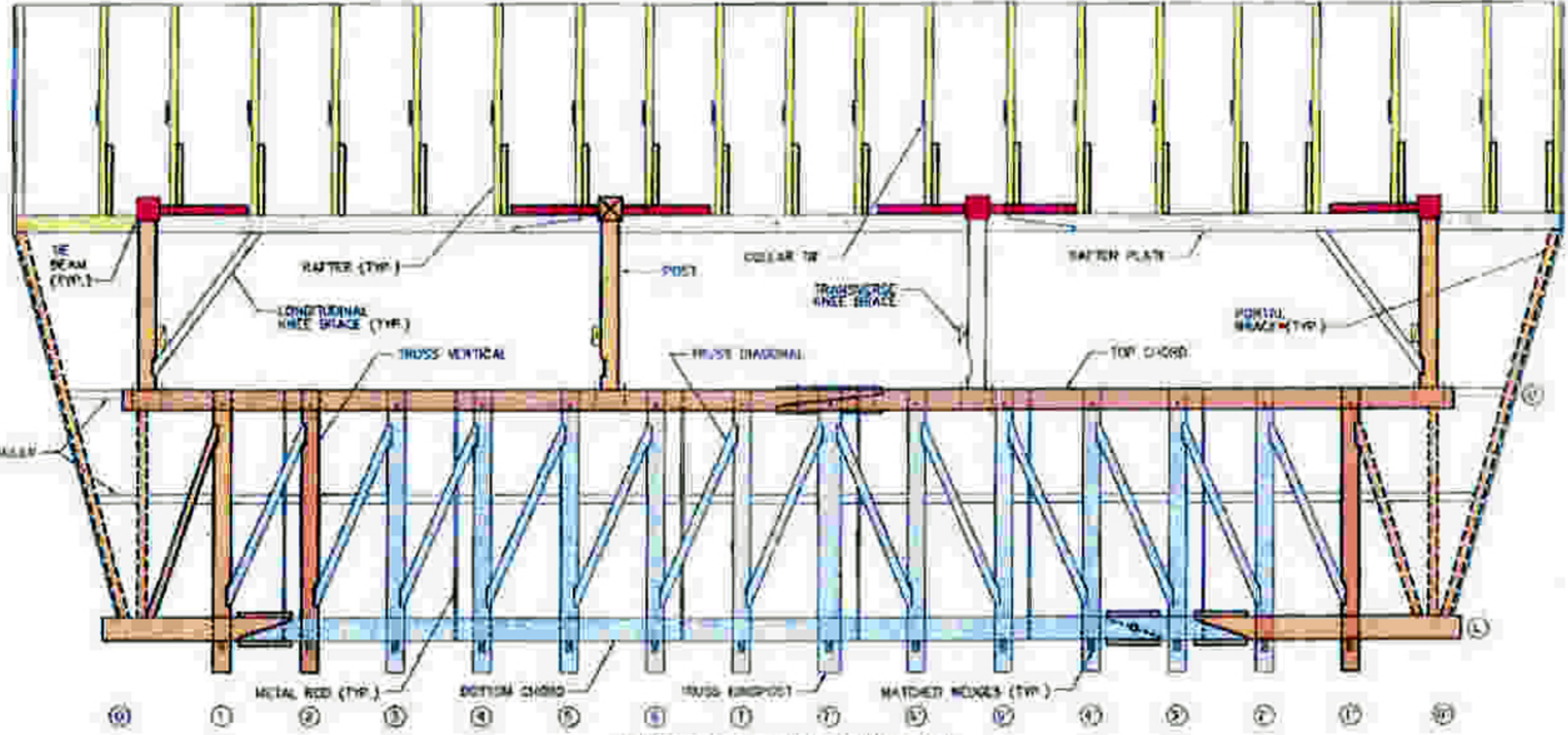
Priority of Treatment

- 1 = Retain and repair
- 2 = Replace in kind
- 3 = Replace

Truss Elevation

- Members thought to be original
- Proposed member replacement
- Proposed supplemental bracing
- Members replaced in kind for bottom chord replacement (lower portions only at panel bracing)

P = Vertical Post above Truss
 U = Upper Chord
 L = Lower Chord
 # = Panel Point Location



UPSTREAM TRUSS ELEVATION
 SCALE: 1/4" = 1'-0"
 (LOOKING UPSTREAM)
 (SHEATHING AND ROOF BOARDS NOT SHOWN)

Figure 9.1.1
 Priority of Treatment - Upstream Truss